

# A&W

**A&JWANG ENTERPRISES LTD**

Laminated Panels

Components

Profiles

Finger-Jointed Timber

DIY panels

Solid Timber DIY Panel

Scaffolding Planks

Door Cores - Coreplate

Building Supplies & Materials

Woodworking Machinery



# Introduction

A & J Wang Enterprises Ltd takes pride in our work, and is a highly regarded supplier of top quality timber products. One of the leading Laminated product manufacturers in New Zealand. We specialise in edge glued laminated timber panels, components and profiles. Fifty percent of our product is supplied locally and fifty percent is exported overseas.

## History

A solely Canterbury, New Zealand owned and operated business, A & J Wang Enterprises Ltd was established by Tony, Jan and Jeremy Wang in 1992. Christopher Brakey became a shareholder in 1995.

## Export

A & J Wang Enterprises Ltd currently export panels and timber to Australia (Sydney, Melbourne and Brisbane), Japan, America, Korea and Taiwan.



*'Our ambition is to produce a high quality product range.'*



## The Team

Jeremy Wang

Managing Director  
Sales, pricing and quotes  
jcywang@ihug.co.nz

Janice (Jan) Wang

Office Manager  
Account enquiries

Sharron Wells

Manager  
General enquiries  
Order enquiries, customer relations  
swells\_ajwang@ihug.co.nz

Mark Wells

Factory Manager

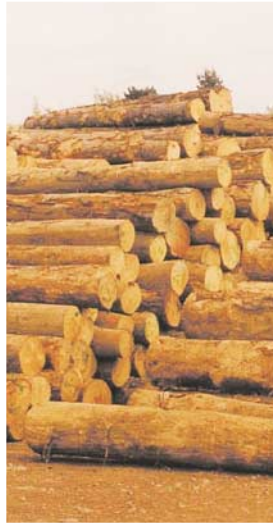
Staff

The remaining team members help to process panel/s to each individual customers specified requirements.

*A & J Wang Enterprises have training for their employees through Forest Industries Training and Christchurch Polytechnic.*

# Resource

A & J Wang Enterprises Ltd source timber from parts of the North Island and all over the South Island. We believe in the replenishment of our forest lands. Wood products are recognised as coming from 'well-managed' forests adhering to strict environmental and socio-economic standards.



*'New Zealand timbers are used for quality'*



## Manufacturing Process

The manufacturing process begins in the factory with a rough sawn product of timber, which is then docked to components with a 10mm overcut in length. Your components are then machined to your specification and passed through to the laminating room.

### Hot Press Laminator

Your panels are made in the hot press laminator to the specified size and to your grade specifications, with a 3mm - 5mm oversize in width. Knotty grade panels can be filled with a wood-filler in your choice of colour (one face or two). Your panels are then passed on to the sanders who will finish the product with your choice of sanding grit and to your specified thickness'.

### Rotary Clamp

A & J Wang Enterprises also have facilities for Cold Press Lamination available.

# Grade Specifications

## Clear Pine Panel

Clear grade specs are all four edges and two top faces clear.



## No2 Clear Pine Panel

No2 clear specs are all four edges and one top face clear with reverse face allowing some defects.



## No2 Clear Pine Panel

Reverse side



## Knotty Grade Pine Panel

Knotty grade panel specs are all four edges clear, two top faces tight knots allowed.



## Industrial Grade Pine Panel

Industrial grade pine panel has the allowance of pith, small resin pockets, small cone holes and resin streaked boards. With the two edges and two ends free from knots, but the possibility of pith and resin pockets showing on those ends.



#### Clear Grade Finger-Jointed Pine Panel

Finger-jointed clear grade panel has good joint, all four edges and two top faces clear.



#### Knotty Grade Finger-Jointed Pine Panel

Finger-jointed knotty grade panel has good joint and tight knots on both top faces, all four edges clear.



#### Clear Grade Rimu Panel

Clear grade rimu panel has all four edges and two top faces clear. These are also colour matched in the process of manufacture for overall better display/viewing of the furniture processed from these panels.



#### Knotty Grade Rimu Panel

Knotty grade rimu panel has four clear edges with exception to most size tight knots, except spike knots. Rimu panels are colour matched in the process of manufacture for better overall display/viewing of the furniture processed from these panels.

# Timber Specifications

## Timber Types

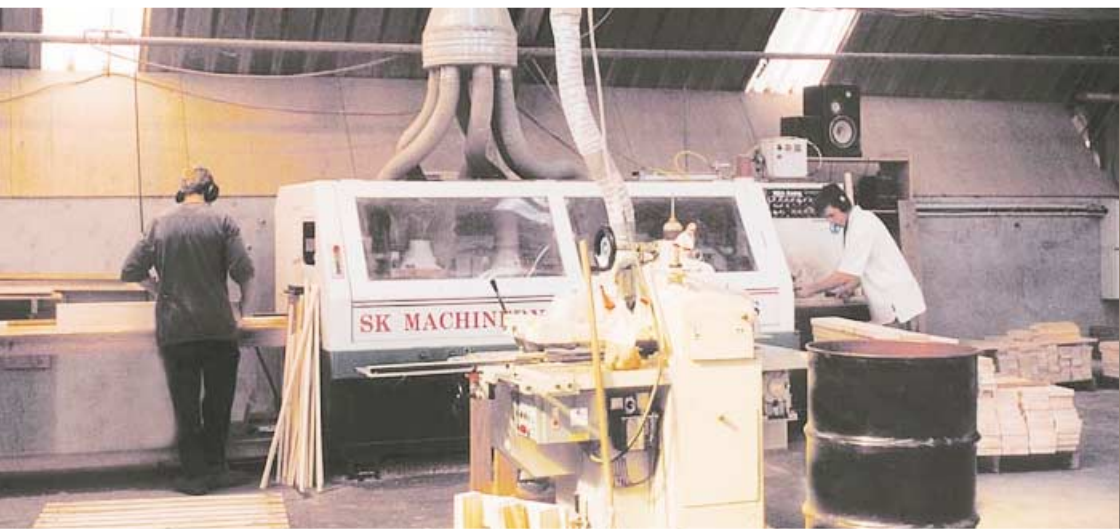
Pinus Radiata (pine) Rimu (NZ Native) specified management cuttings Silver Beech (NZ Native) specified management cuttings Kauri (NZ Native) specified management cuttings and all other types available on request.

## Panel Sizes and Timber Thickness'

We will manufacturer panels to specified requirements - size and thickness.

## Grade Specifications

- C1 clear on all four edges and both faces
- C2 no2 clear, clear on all four edges, one face (knots allowed on opposite face)
- Tight knot (dressing grade)
- Standard grade (pith free)
- Industrial, pith allowed, small cone holes and light resin.
- Finger-jointed panel both clear and knotty grade.



*'Manufactured to your specifications'*



## Finger-Jointing

Our Finger-joining machine has the capabilities of producing finger-jointed long lengths of timber from off-cuts/shooks which are cut free from end knots, put through the F/J machine through the trim saw and then has the fingers cut into the timber with specially designed cutters/knives. The shooks then have a special glue spread onto the surface tips and into the bottom of the fingers and then each shook is pressed together to the length requested by the client. We have the capability of joining timber lengths through to 7.0 meters.

We join varying sizes of pre-cut shook for a number of building purposes like ceiling battens, house framing, panel grade timber (both clear and knotty), mouldings and many other varieties as requested.

# Solid Timber DIY Panel



Our new range of DIY Panel is designed especially for you. We have eight finished sizes from which to choose, all cut to length, width and with a finished thickness of 19mm.

*For all those DIY jobs*

# Scaffolding Planks



Our laminated scaffolding planks are top quality and suited to those in working in the scaffolding and building industries, along with the DIY customer.

# Door Cores - Coreplate



Solid timber blank - any size and thickness available using our custom production service. We presently supply a number of sizeable door manufacturers worldwide with this line of product.

# Building Supplies & Materials



We are pleased to offer an expanding range of quality building supplies and materials.

Product lines include:

- Gypsum wallboard in various sizes
- Jointing compounds and associated products
- Plywood
- Glass

We also provide a custom importing service, and welcome the opportunity to discuss your needs.

# Woodworking Machinery

We are able to supply a comprehensive range of woodworking machines and accessories directly from international manufacturers. Our importing service gives our clients the flexibility to highly customise woodworking machinery to suit specific needs and requirements.





For any further enquires or  
a factory tour, please contact  
A & J Wang Enterprises.

565 Sawyers Arms Road  
Harewood Christchurch  
New Zealand

Phone +64-3-359 8849

Fax +64-3-359 8682

[jcywang@ihug.co.nz](mailto:jcywang@ihug.co.nz)